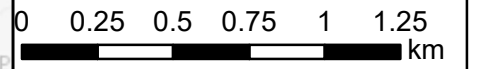


1:750,000

**Key:**

- Newbuild Infrastructure Boundary
- NRW Development Advice Zone B
- NRW Development Advice Zone C1
- NRW Development Advice Zone C2
- Babelst BVS (indicative location)
- Cornist Lane BVS (indicative location)
- Pentre Halkyn BVS (indicative location)

SCALE: 1:25,000



Contains OS data © Crown Copyright and database right 2020

# HyNet North West

**PROJECT TITLE**  
**HyNet Carbon Dioxide Pipeline DCO**

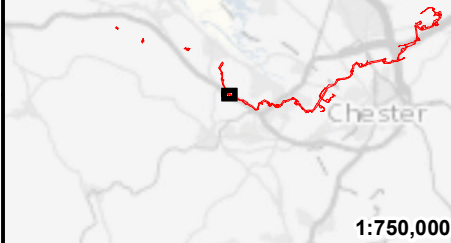
**DRAWING TITLE**  
 Figure 18.5.18:  
 DCO 36 inch Pipeline Development Advice Map Sheet 7 of 7

**DRAWING STATUS**  
 Final for DCO Examination - submitted at Deadline 7

<b>DRAWN</b> VA	<b>CHECKED</b> JH	<b>APPROVED</b> EI	<b>AUTHORISED</b> MT
--------------------	----------------------	-----------------------	-------------------------

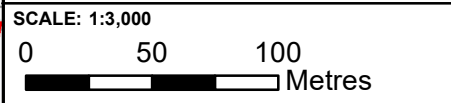
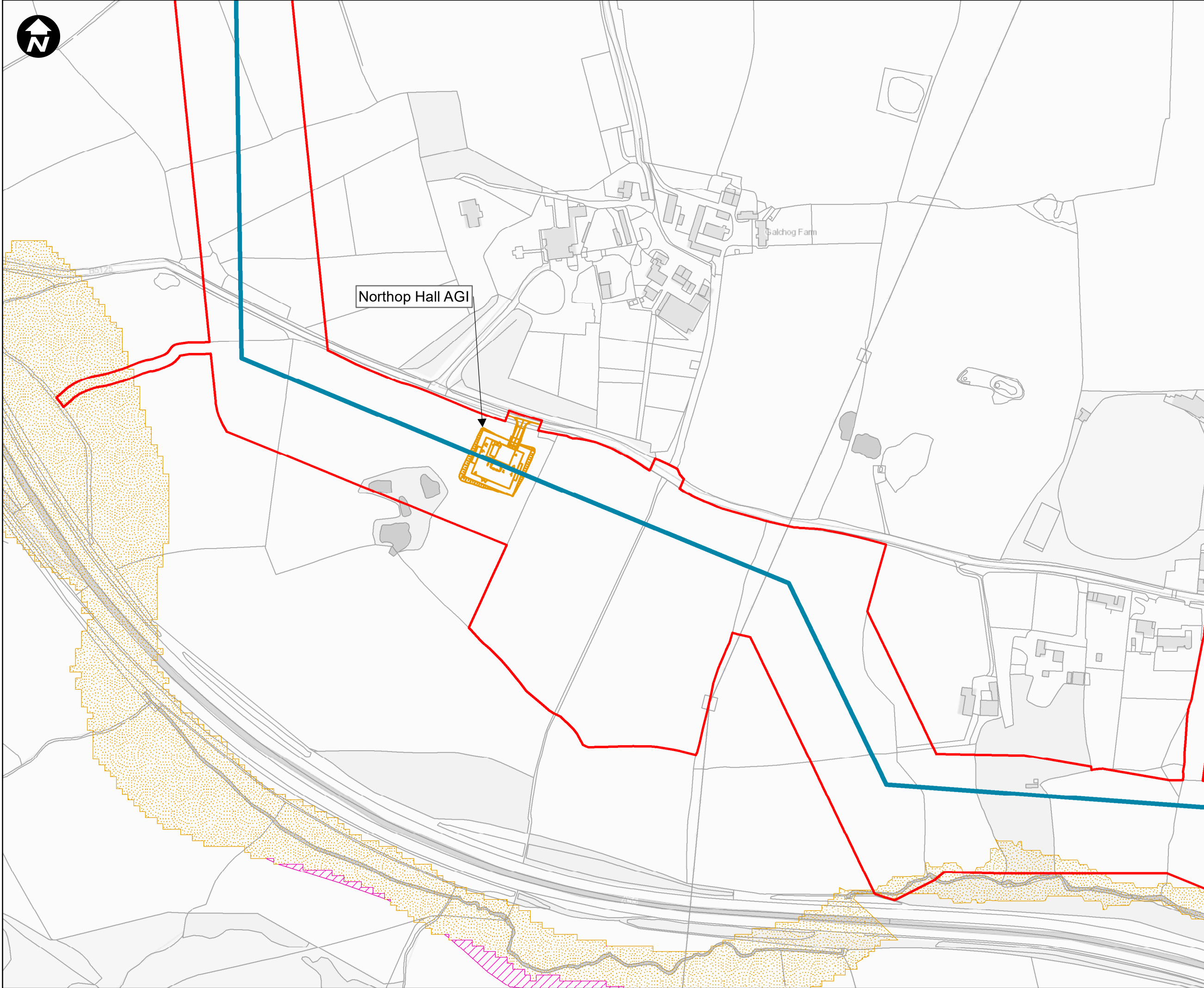
<b>SCALE @ A3 SIZE</b> 1:25,000	<b>DATE</b> 28/08/2023	<b>REVISION</b> C
------------------------------------	---------------------------	----------------------

**DRAWING NUMBER**  
 EN070007-APP-ES-18.5.18-Sheet 7



**Key:**

-  Newbuild Infrastructure Boundary
-  Indicative alignment of the Stanlow AGI to Flint AGI Pipeline
-  Northop Hall AGI (Indicative Location)
-  NRW Development Advice Zone B
-  NRW Development Advice Zone C2



Mapping reproduced by permission of Ordnance Survey on behalf of HMSO  
 Contains OS data © Crown Copyright and database right 2022

## HyNet North West

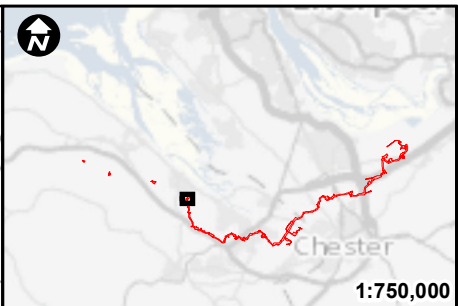
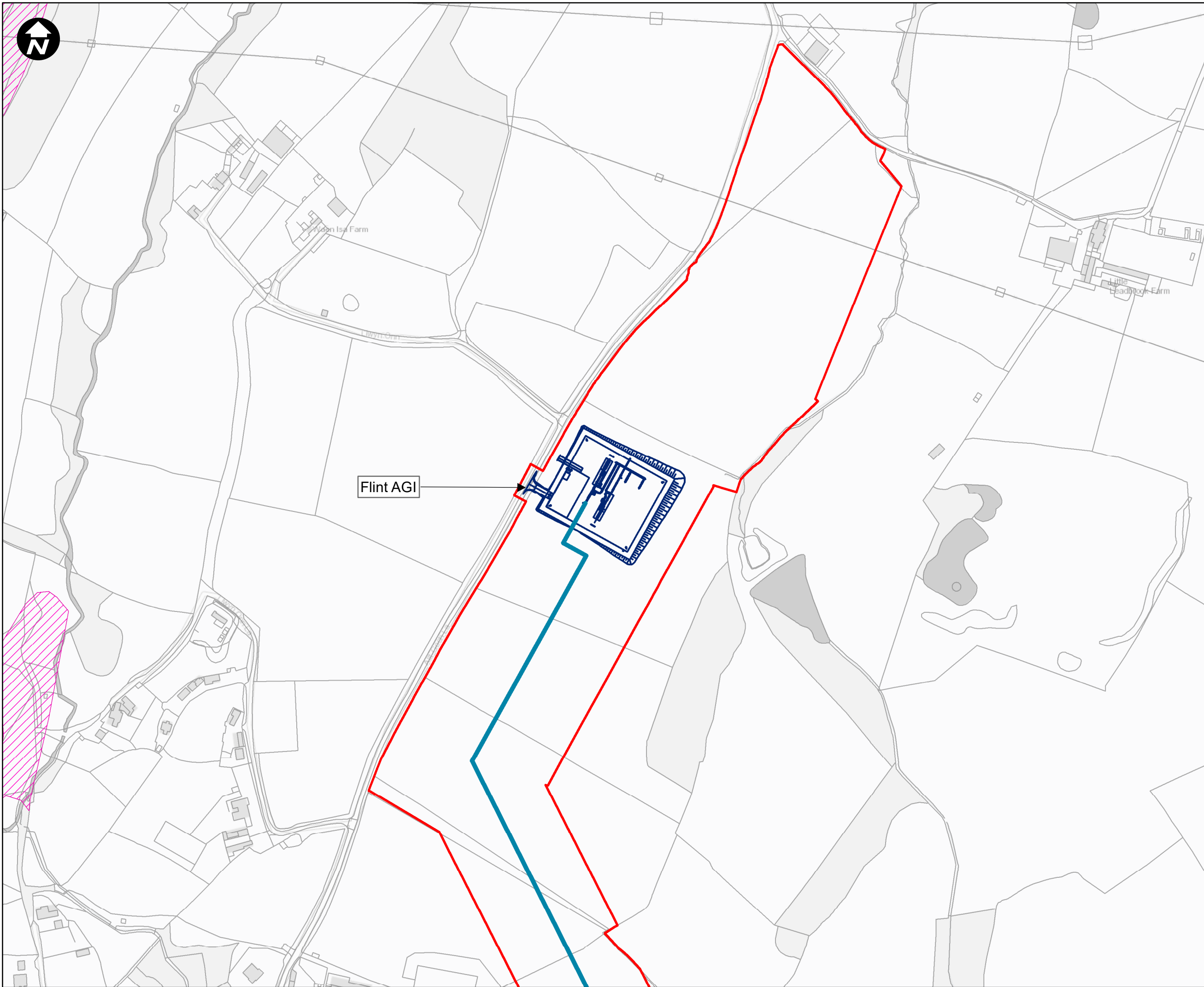
PROJECT TITLE  
**HyNet Carbon Dioxide Pipeline DCO**

DRAWING TITLE  
 FIGURE 18.5.19  
 NORTHOP DEVELOPMENT  
 ADVICE MAP

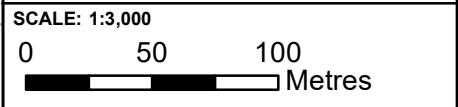
DRAWING STATUS  
 Final for DCO Examination - submitted at Deadline 7

DRAWN VA	CHECKED JH	APPROVED EI	AUTHORISED MT
SCALE @ A3 SIZE 1:3,000	DATE 21/08/2023	REVISION C	

DRAWING NUMBER  
 EN070007-APP-ES-18.5.19



- Key:**
- Newbuild Infrastructure Boundary
  - Indicative alignment of the Stanlow AGI to Flint AGI Pipeline
  - Flint AGI (Indicative Location)
  - NRW Development Advice Zone B



Mapping reproduced by permission of Ordnance Survey on behalf of HMSO  
 Contains OS data © Crown Copyright and database right 2022

**HyNet North West**

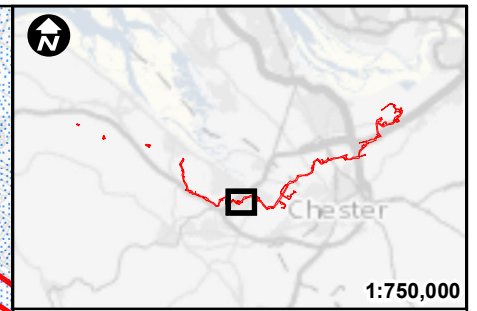
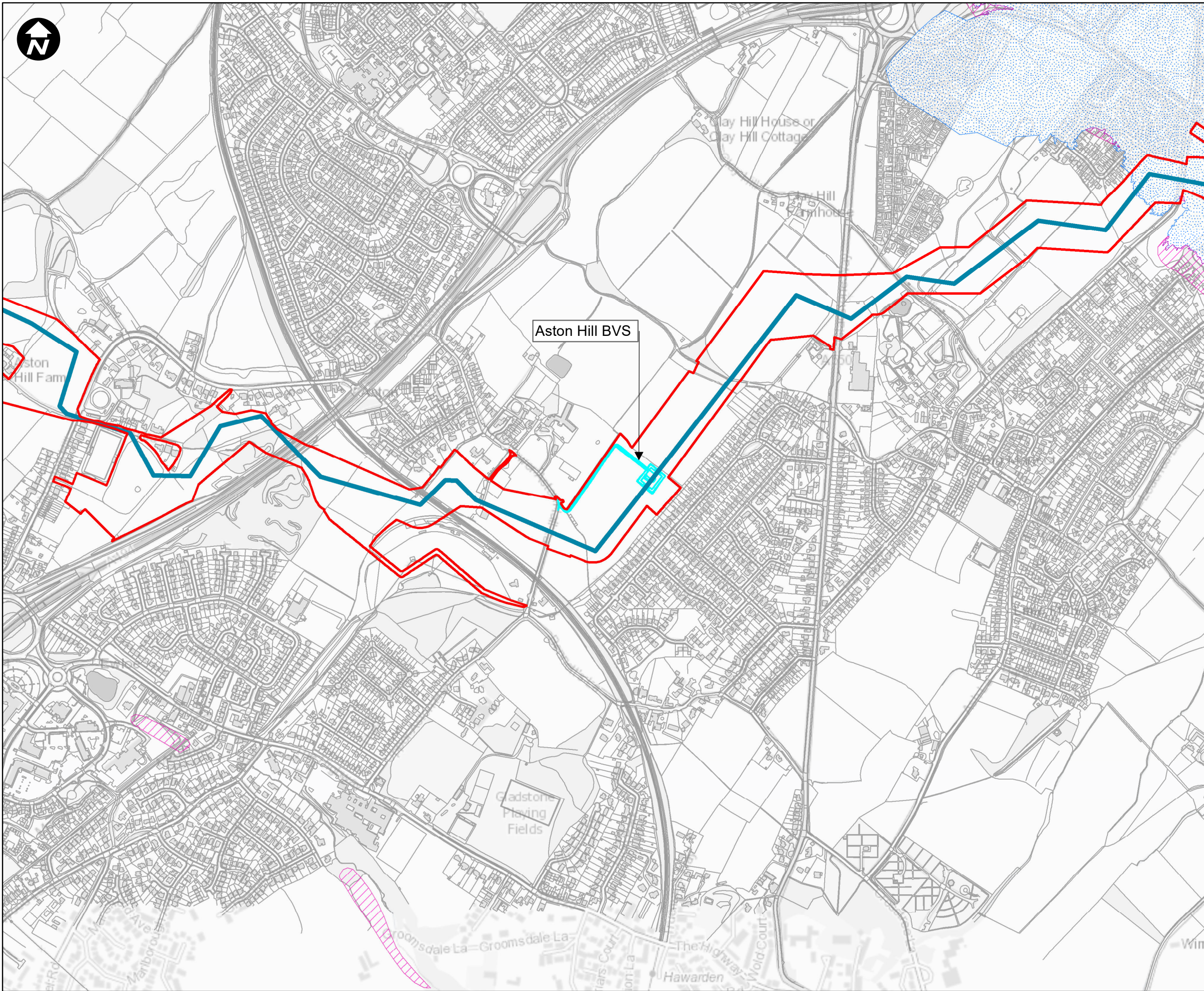
PROJECT TITLE  
**HyNet Carbon Dioxide Pipeline DCO**

DRAWING TITLE  
 FIGURE 18.5.20  
 FLINT DEVELOPMENT ADVICE MAP

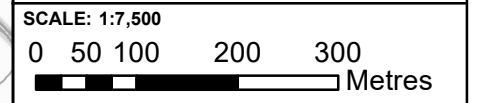
DRAWING STATUS  
 Final for DCO Examination - submitted at Deadline 7

DRAWN VA	CHECKED JH	APPROVED EI	AUTHORISED MT
SCALE @ A3 SIZE 1:3,000	DATE 21/08/2023	REVISION C	

DRAWING NUMBER  
 EN070007-APP-ES-18.5.20



- Key:**
- ▬ Newbuild Infrastructure Boundary
  - ▬ Indicative alignment of the Stanlow AGI to Flint AGI Pipeline
  - ▬ Aston Hill BVS (Indicative Location)
  - NRW Development Advice Zone B
  - NRW Development Advice Zone C1



Contains OS data © Crown Copyright and database right 2020  
 Contains OS data © Crown Copyright and database right 2022

**HyNet North West**

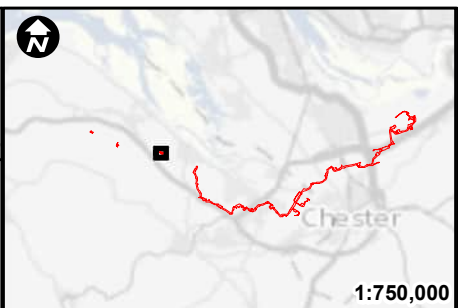
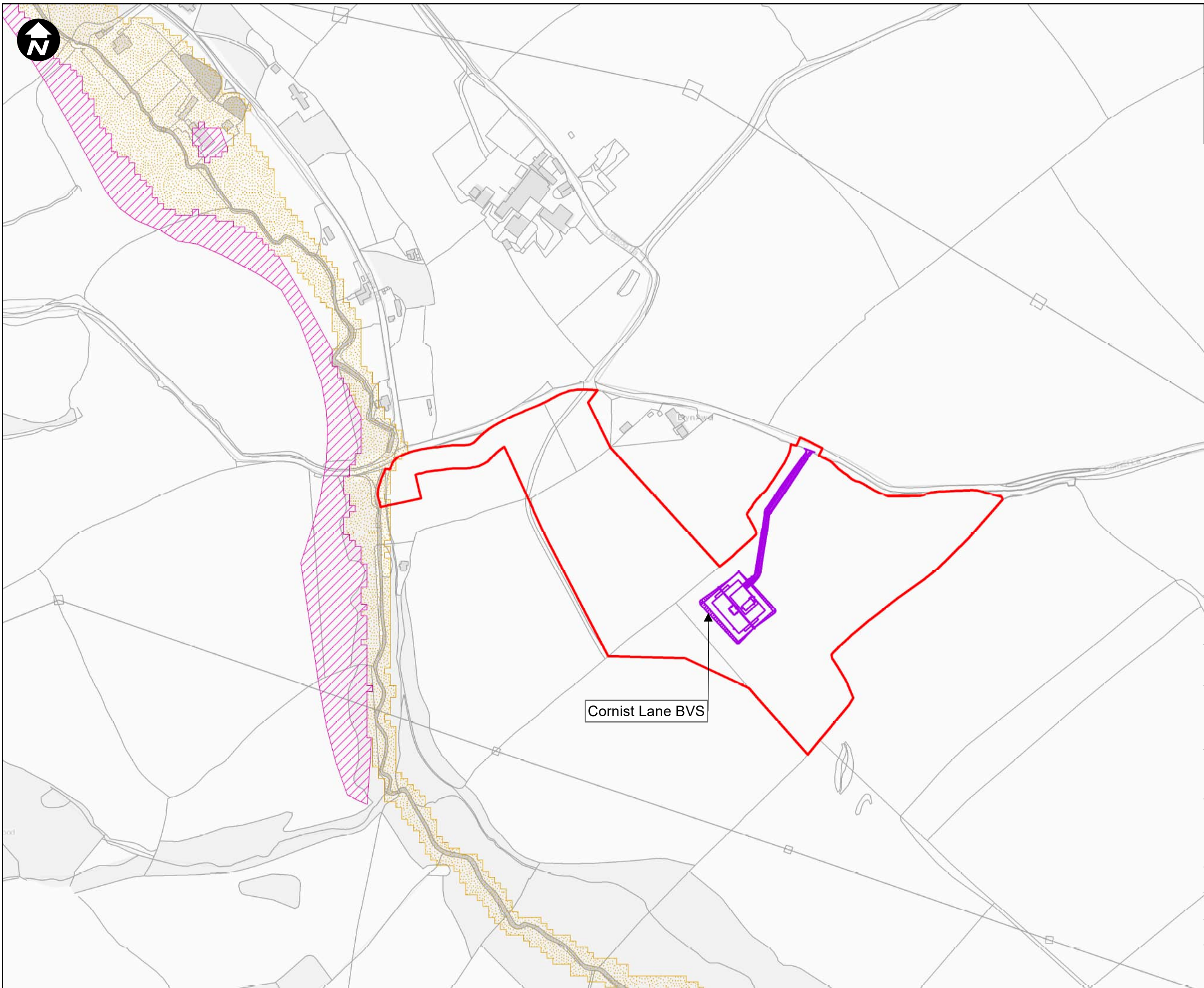
PROJECT TITLE  
**HyNet Carbon Dioxide Pipeline DCO**

DRAWING TITLE  
 FIGURE 18.5.21  
 ASTON HILL DEVELOPMENT  
 ADVICE MAP

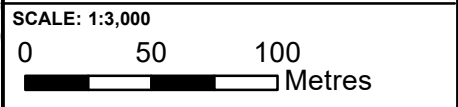
DRAWING STATUS  
 Final for DCO Examination - submitted at Deadline 7

DRAWN VA	CHECKED JH	APPROVED EI	AUTHORISED MT
SCALE @ A3 SIZE 1:7,500	DATE 21/08/2023	REVISION C	

DRAWING NUMBER  
 EN070007-APP-ES-18.5.21



- Key:**
- Newbuild Infrastructure Boundary
  - Cornist Lane BVS (Indicative Location)
  - NRW Development Advice Zone B
  - NRW Development Advice Zone C2



Mapping reproduced by permission of Ordnance Survey on behalf of HMSO  
 Contains OS data © Crown Copyright and database right 2022

**HyNet North West**

PROJECT TITLE  
**HyNet Carbon Dioxide Pipeline DCO**

DRAWING TITLE  
 FIGURE 18.5.22  
 CORNIST LANE DEVELOPMENT  
 ADVICE MAP

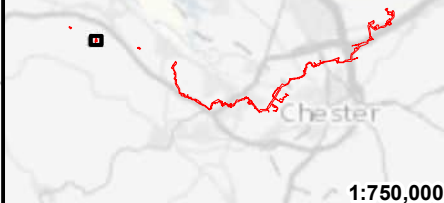
DRAWING STATUS  
 FOR DESIGN CHANGE REQUEST 1

DRAWN	CHECKED	APPROVED	AUTHORISED
KD	JH	EI	MT





SCALE @ A3 SIZE	DATE	REVISION
1:3,000	20/03/2023	B

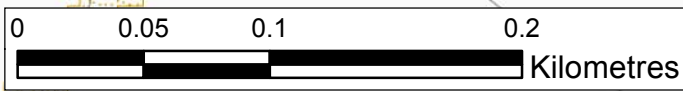
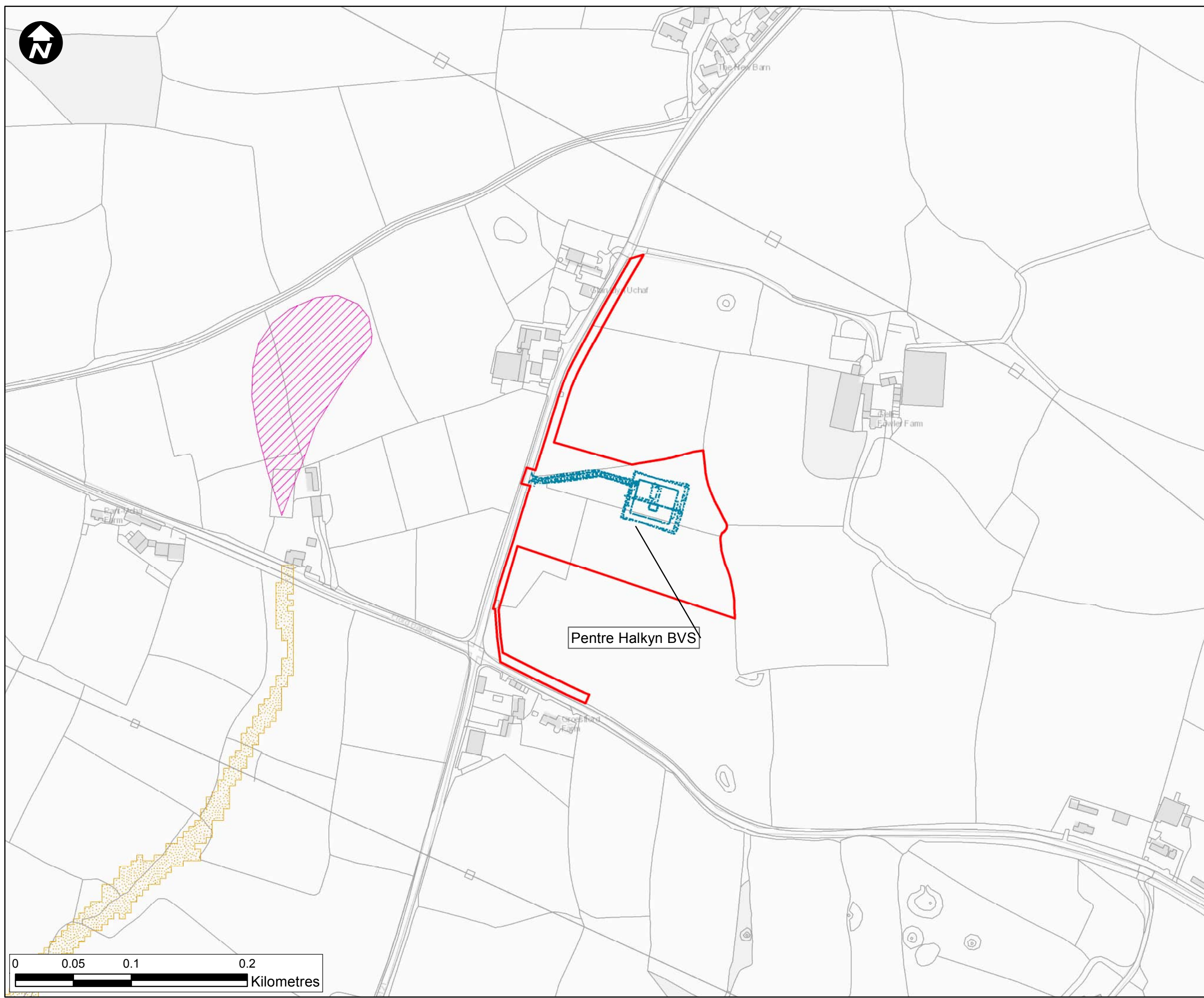
DRAWING NUMBER  
 EN070007-APP-ES-18.5.22

Cornist Lane BVS



**Legend**

-  Newbuild Infrastructure Boundary
-  Pentre Halkyn BVS (indicative location)
-  NRW Development Advice Zone B
-  NRW Development Advice Zone C2



Contains OS data © Crown Copyright and database right 2022

### HyNet North West

**PROJECT TITLE**  
HyNet Carbon Dioxide Pipeline

**DRAWING TITLE**  
Figure 18.5.23 Pentre Halkyn Development Advice Map

**DRAWING STATUS**  
FOR INFORMATION

<b>DRAWN</b> RK	<b>CHECKED</b> RH	<b>APPROVED</b> VM	<b>AUTHORISED</b> EI
--------------------	----------------------	-----------------------	-------------------------

<b>SCALE @ A3 SIZE</b> 1:3,000	<b>DATE</b> 27/07/2022	<b>REVISION</b> P01
-----------------------------------	---------------------------	------------------------

**DRAWING NUMBER**  
EN070007-APP-ES-18.5.23-Sheet1



# Annex H

## TAN15 CHECKLIST



---

## SuDS Approval Checklist

---

### S1 – Surface water runoff destination

Level	Are you able to apply the following?	Yes	No	If no, can you move onto the next level?
Level 1	Rainwater collected for use			
Level 2	Discharge of surface water into the ground			
Level 3	Discharge to a surface water body			
Level 4	Discharge to a surface water sewer or highway drain			
Level 5	Discharge to a combined sewer			

### S2 – Surface water runoff hydraulic control

Level	Are you able to apply the following?	Yes	No	If no, can you move onto the next level?
Level 1	Interception by runoff			
Level 2	Morphological protection of receiving surface water bodies			
Level 3	Flood risk mitigation for receiving surface water bodies			
Level 4	Flood protection for the site			
Level 5	Extreme event exceedance management of surface water runoff			
Level 6	Evaluation of impact of potential failure of a drainage system			
Level 7	If site is contaminated, can infiltration take place in			

	isolation from the contaminated layer			
--	---------------------------------------	--	--	--

### S3 – Water Quality

Level	Are you able to apply the following?	Yes	No	If no, can you move onto the next level?
Level 1	Exceptions for combined sewers			
Level 2	SuDS design for pollution prevention			
Level 3	Required measures for pollution prevention			
Level 4	Pollution control requirements for different land use types and appropriate design strategies			

### S4 – Amenity

Level	Are you able to apply the following?	Yes	No	If no, can you move onto the next level?
Level 1	Can the water be kept at or close to the ground surface?			
Level 2	Is the SuDS design visually aesthetic to the public?			
Level 3	Can the land for SuDS be used for other purposes?			
Level 4	When needed can maintenance be used promptly?			
Level 5	Can vegetation be included in the design?			

## S5 – Biodiversity

Level	Are you able to apply the following?	Yes	No/N/A	If no, can you move onto the next level?
Level 1	Can the SuDS scheme be like, linked with, and/or supportive of the natural habitat and associated species?			
Level 2	Where appropriate can the SuDS benefit priority habitats?			
Level 3	Where appropriate can the SuDS provide biodiversity that is self-sustaining and resilient to changes in environmental conditions?			

## S6 – Design of drainage for Construction, Operation and Maintenance and Structural Integrity

Level	Are you able to apply the following?	Yes	No	If no, can you move onto the next level?
Level 1	Can the design indicate how SuDS features will be managed, protected and commissioned?			
Level 2	The designer provides information in the form of a construction plan to advise those			

	responsible for construction of the SuDS.			
Level 3	The materials including products, components, fittings or naturally occurring materials be of suitable nature to preserve natural resources			
Level 4	The design to include a proposed maintenance plan			
Level 5	Where deposited sediment could affect the design life of the SuDS, provide a sediment control system			
Level 6	Include plan of the health and safety risks associated with the maintenance of the drainage systems and how to minimise these risks			

For full guidance on SuDS approval please check the following document:

<https://gweddill.gov.wales/docs/desh/publications/181015-suds-statutory-standards-en.pdf>



